

Installation instruction do88 performance Y-pipe (997.2) 2010-2012

Part number: TR-130



This instruction shows how to replace the OEM Y-pipe with the do88 performance Y-pipe.

At this type of installation we always recommend that you have mechanical experience and knowledge about safety during work on vehicles.

Parts included:

1. do88 Performance Y-pipe
2. Silicone hose intercooler outlet, left side
3. Silicone hose intercooler outlet, right side
4. 2pcs hose adaptors (only included if you have bought to fit with OEM intercooler setup).
5. 4pcs hose clamps
6. M5 sensor screw.

1. Open both the engine lid and luggage compartment lid.
Disconnect the negative battery terminal.
Note! Do not close the luggage compartment lid after you have removed the battery terminal.

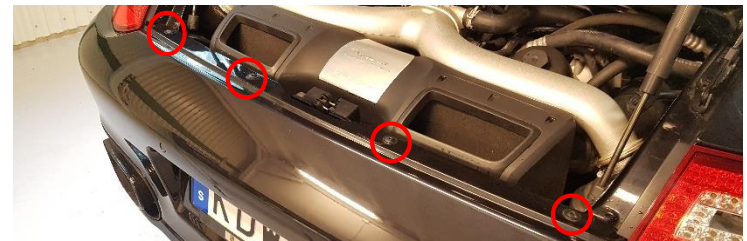
2. Lift and secure the car so both rear wheels can be safely removed.



3. From each rear part of the rear inner fenders, Remove 5pcs Torx T25 screws.



4. Remove the 4pcs Torx T30 along the top of the bumper.



5. Loosen 2x Torx T25 and gently pull the rear light straight back. Disconnect the cable connector. Do this on both sides.



6. Remove 1pc of plastic Torx T30 screw. After the screw has been removed gently peel away the plastic rivet. Do this on both sides.



7. Remove 6pcs Torx T30 screws along the bottom of the bumper.



8. Remove 1pcs Torx T30 screw in the top end of the bumper inside each wheel housing.



9. Now remove the rear bumper. With the help of a friend, gently pull each corner of the bumper out from the wheel house edge a bit. Then pull the bumper straight back. Disconnect the cable going to the bumper.

10. Remove the Y-pipe.
6pcs hose clamps
1pc cable connector
1pc vacuum line click connection.

11. Remove the air filter box. Loosen the two hose clamps to the turbo inlet pipes. Lift the air filter box straight up.

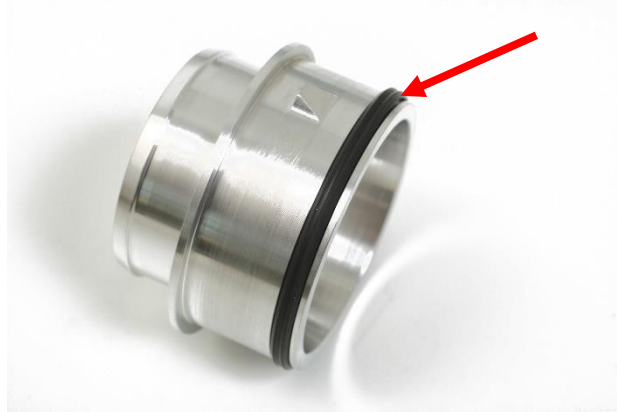


12. Remove the intercooler outlet hose (upper) from the intercoolers on both sides by prying out the quick coupling lock clips with a flat screwdriver about 10mm and then pull out the hose.

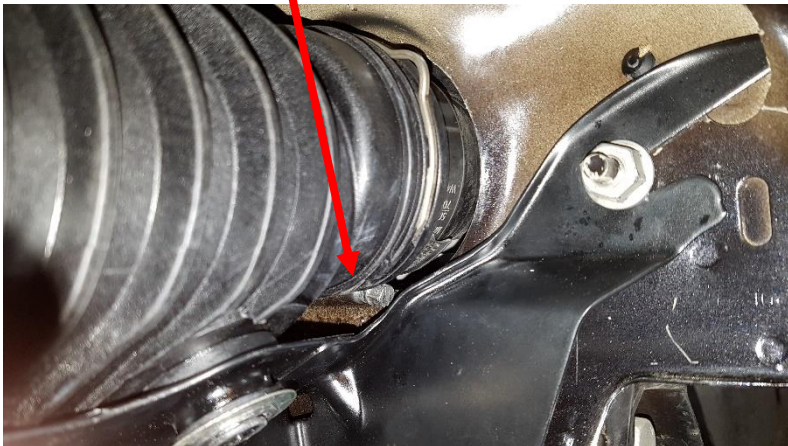


- 13.** If you have bought the do88 Performance Y-pipe to fit together with the OEM intercooler setup, then you will need to reuse the OEM O-rings from the intercooler outlet hoses.

Gently remove and install on the included hose adaptors. Make sure the O-rings don't get damaged or twisted!

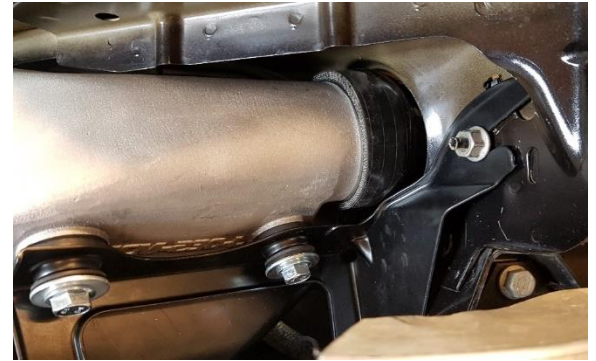


- 14.** If you have bought the do88 Performance Y-pipe to fit together with the OEM intercooler setup, now install both hose adaptors. Push on both intercooler outlet silicon hoses and align the hose clamp into this position shown on photo below. Don't tighten the hose clamp yet. You must align the hose into right position towards the Y-pipe first.



15. If you have bought the do88 Performance Y-pipe to fit together with the do88 Performance intercooler setup. Now install both intercooler outlet silicone hoses. It is easier if you put the hose clamp on the intercooler outlet before pushing on the silicone hose.

Don't tighten the hose clamp yet. You must angle the hose into right position towards the Y-pipe first.



16. Re-install the air filter box and install the Y-pipe. Align the intercooler outlet hoses into a good position and then tighten all the hose clamps.



17. Install all other parts in reverse order. (When installing the sensor use the included M5 screw.)