

# Installation instruction do88 performance intake system SAAB 9-3 2.0T 2005-

Part number: IR-110

This instruction shows how to replace the OEM turbo intake system with do88 performance intake system.

At this type of installation we always recommend that you have mechanical experience and knowledge about safety during work on vehicles.



## Parts included:

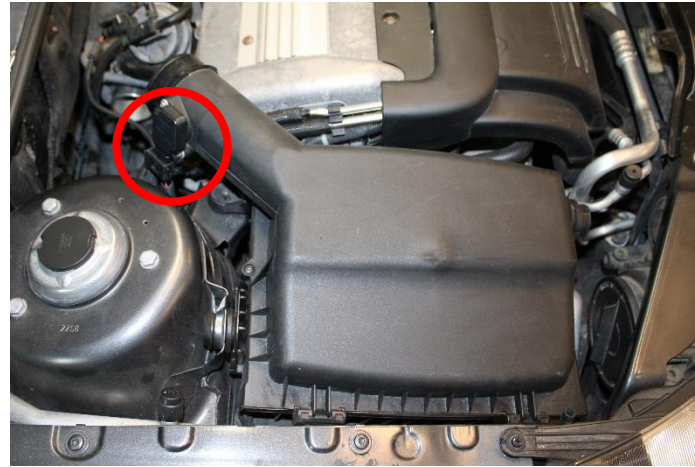
1. Heat shield
2. Performance intake pipe
3. Turbo intake silicone hose
4. Air filter (If you chose this option)
5. 2x M4 T20 10mm & 2x M4 Washers
6. 3x Hose clamps (2x if you have chosen no filter)
7. 8mm Silicone cap & Hose clamp 12-14mm
8. Rubber sealings
9. O-ring 27x1.3mm (not on photo)

**do88**  
Performance

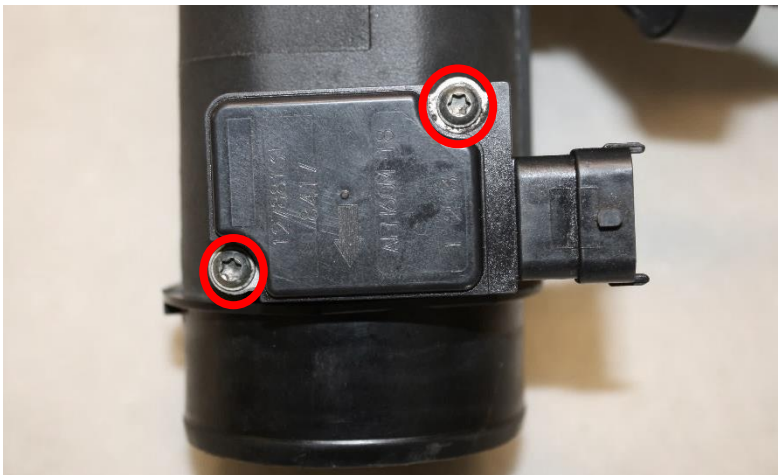
1. Loosen 2x hose clamps and the vacuum hose(s). Then remove the intake pipe from the car.



2. Disconnect the MAF sensor cable connector then remove the air filter box from the car.

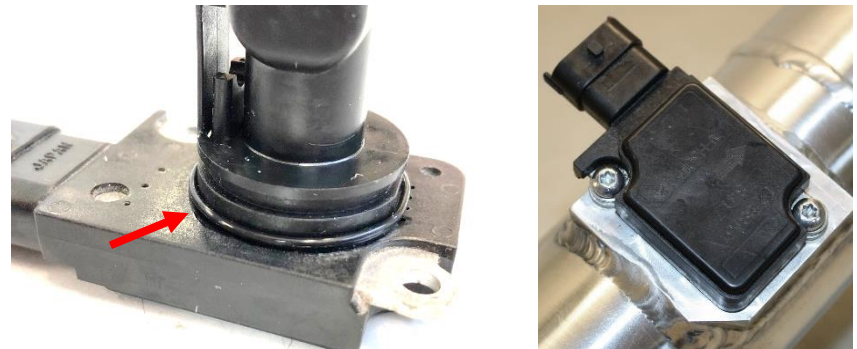


3. Remove 2x Torx T20 from the MAF sensor. Then remove the MAF sensor.



4. Remove the OEM O-ring from the MAF sensor. Install the included O-ring as on the photo below. Fasten the MAF sensor with the 2 included M4 T20 screws and 2x M4 washers.

The arrow on the sensor should point towards the turbo.



5. The OEM air filter box has 3 rubber bushings. Make sure the 2 upper of them are installed in their brackets on the car. The third lower busing you should push onto the bracket on the do88 heat shield.

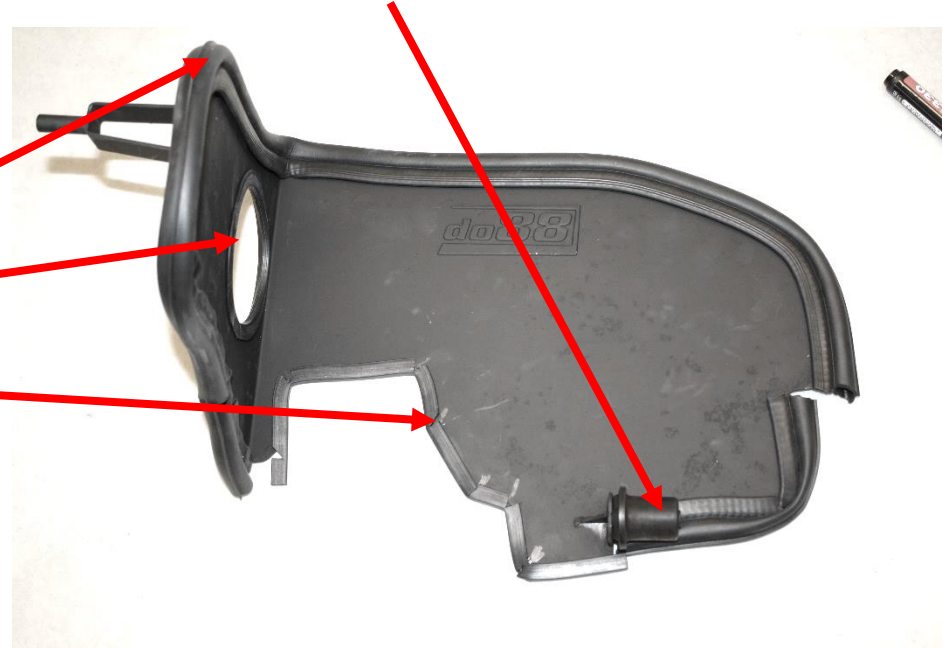
6. Install the included 2 included rubber sealing along the edges of the heat shield.

- The large one (1.2m long) should follow the entire outer contour except the part around the engine bracket.
- The middle size one (0.29m) should be in the hole.
- The small one (0.3m long) should follow the contour of the engine bracket.

The sealing can be trick to attach. The large on may need cuts with a plier on the inside of corners to allow it to make sharper turns. You can also with a flat plier press the metal clips inside the sealing to make it hold the heat shield better if necessary.

The small sealing will need V-shaped cuts in each corner to make it stick.

Take your time and don't rush this step.



7. Install the heat shield in the car.
1. Start with inserting the lower busing into its bracket in the car (some lubrication helps).
  2. Push the heat shield so it will go into the center groove on the engine mount.
  3. Push the upper bracket into the rubber bushing.

It is suppose to be a tight fit since that will minimize hot air reaching the air filter.

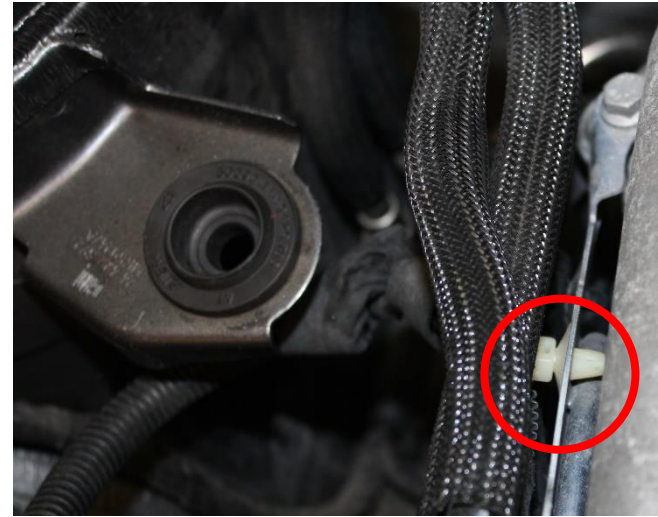




**8.** Put the silicone hose onto the turbo inlet, also put the included hose clamps on both ends. Don't tighten them yet, wait until you align the hose with the intake pipe.



**9.** Unclick this small cable bracket, it is necessary to do this to get enough cable length for the MAF sensor.



**10.** If you have manual transmission you will need to cover the larger vacuum hose connection on the intake pipe. Use the included silicone cap and hose clamp.



**11.** Install the do88 performance intake pipe. Now align the silicone hose into a good position. Connect the MAF sensor cable, vacuum hose(s) and tighten the hose clamps.



12.

Install the supplied air filter if you purchased with air filter or install some other good quality air filter.



13.

Finished.